

Name	unami18		
Location	Kita-ku, kita 18-jo nishi 6-chome 2-12		
Construction	Built in 1988, Steel, 4 stories, 32 units	type	intermediary

Contract period	Bathroom/Toilet	Heater	Gas	Internet
2 years	separate	kerosene	propane	Assigned internet (free)

<Propane information>

Basic fee	5.0m <sup>2</sup> (include basic fee)	10.0m <sup>2</sup> (include basic fee)	15.0m <sup>2</sup> (include basic fee)	20.0m <sup>2</sup> (include basic fee)
2145円 (with tax)	7,260円 (with tax)	12,375円 (with tax)	14,850円 (with tax)	16500円 (with tax)

※ Prices are counted by 10% tax fee, vary depending on the the price of crude oil. (updated: 2022/2/17)

available date	room	floor	layout	Facing	rent fee	deposit key money	management
						0・0	3,000

※Rent fee will be increased by 1,000 yen for 1 year

initial cost	deposit	0 month	monthly cost	rent fee	as above
	key money	0 month		management	as above
	rent fee in advance	1 month		water bill	3,000 円
	management fee	1 month		association	200 円
	association fee	200 円		electricity	consumption
	water bill	3,000 円		gas	consumption
	cleaning fee	28,600 円		kerosene	consumption
Contract administration fee	5,500 円	24h support	1,000 円		
24h management fee	1,000 円	※Payment Commissio	As below		
※Payment Commissio	As below				

others [When using a guarantee company]  
 Initial guarantee fee 10,000 yen(No renewal fee for the first time only) and payment commission (rent fee+management fee+water bill+24h management fee+association fee) × 1.5% should be paid to guarantee company directly.  
 Cleaning fee : 28,600円 (tax included) ※water bill of September is 2,900円

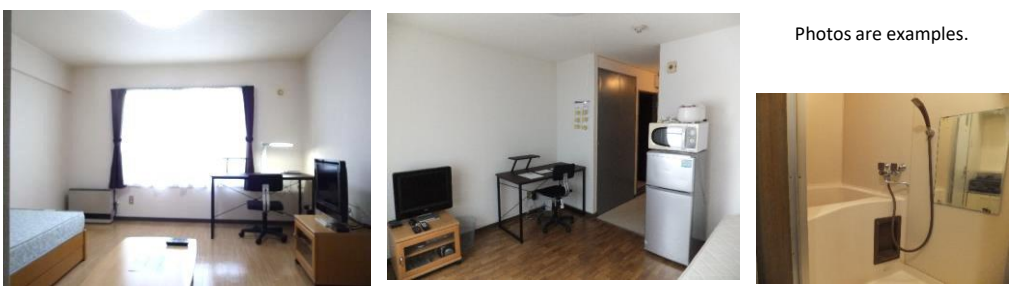
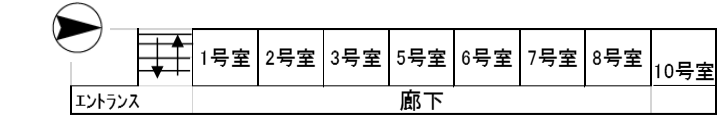
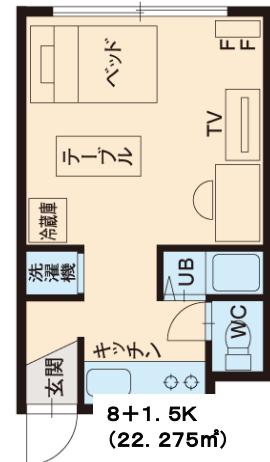
Facilities gas hot water supply/kerosene heater/washing machine/refrigerator/micro wave/desk lamp/table  
 TV/broadcasting digital tuner/bed/mattress/curtain/clothes iron/dryer/vacuum cleaner  
 garbage box/rice cooker/water kettle/kitchen bunner/lights/closet

Common Facilities Bike parking lot

- ~ Recommended points ~ **appliances are all on hand**
- ★ with furnitures and home appliances! ★ quiet street close to univ
  - ★ Free Wifi is available immediately after move in ♪
- ~ Neighborhood information ~
- Hokkaido University (Kita 18-jo gate)・・・ 3mins by walk
  - Namboku Line「Kita 18-jo station」・・・・ 5mins by walk
  - ・・・・ 5mins by walk



※ Only examples. The drawings are handwritten and the current status is in given priority.



Photos are examples.

**北海道大学生協同組合 ルームガイド** TEL:011-758-9550 FAX: 011-768-8907

北海道知事 石狩(9)第5076号

〒060-0808 北海道札幌市北区北8条西7丁目1-1 クラークサービスセンター2F Mail:guide@hokudai-roomguide.net