

Name	Thiara N17		
Location	北区北17条西2丁目 1-26		
Construction	Built in 11/1990, concrete, 5 stories, 36 units	type	intermediary

Contract Period	Bathroom/Toilet	Heater	Gas	Internet
1or2 years	separate	gas heater	propane	Free assigned Internet

<Propane information>

Basic fee	5.0㎡ (included basic fee)	10.0㎡ (included basic fee)	15.0㎡ (included basic fee)	20.0㎡ (included basic fee)
1,705円 (with tax)	5,975円 (with tax)	10,246円 (with tax)	11,869円 (with tax)	11,869円 (with tax)

※Prices are counted by 10% tax fee, vary depending on the price of crude oil. (updated: 2023/7/20)

※Maximun price plan is available !!

Available Date	Room Number	Floor	Layout	Facing	Rent Fee	Deposit Key money	Management Fee
						0	6,000
※Rent fee will be increased by 1,000 yen for 1 year							

Initial Cost	Deposit	0 month
	Rent fee in advance	1 month
	Management fee	1 month
	Water Bill	2,200 yen
	Community	200 yen
	Cleaning fee	28,600 yen
	Handling fee	5,500 yen
24h management fee	1,000 yen	

Monthly Cost	Rent fee	As Above
	Management Fee	As Above
	Water Bill	2,200 円
	Electricity	Consumption
	Gas	Consumption
	Community	200 円
	24h management fee	1,000 円
※Payment	As below	

Others No washing machine inside but landromat on the 1st floor. There is no partition door on the toilet and wash basin. 【When using a guarantee company】 Initial guarantee fee 10,000 yen(No renewal fee for the first time only) and payment commission (rent fee+management fee+water bill+24h management fee+association fee) × 1.5% should be

Facilities Hot water supplied by gas/Gas FF type heater/Closet/shampoo dresser/Lighting
Refrigerator/Microwave/Rice cooker/System kitchen/TV/Desk/Chair/1 burner stove/Electric fan
Beds, curtains, vacuum cleaners, balconies, Mattresses(※Applicants: irons, hair dryers, ironing board, TV, Kettle)

Common facilities Auto-lock/Parking lot/Coin laundry(On the 1st floor)/Delivery BOX

Key money

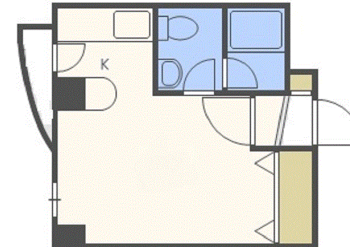
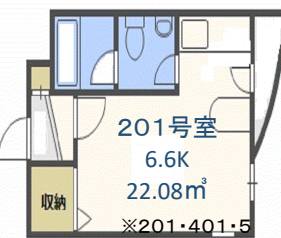
~ Recommended points ~

With furnitures・appliances

- ★ With furnitures and home appliances! Free internet! ★ Close to Kita 18 station!
- ★ Maximum price available for gas and propane!! No worry about it anymore ♪

~ Neighborhood information ~

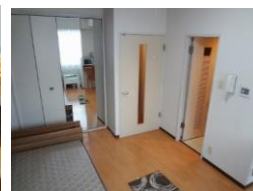
- Hokkaido University (18-jo gate) 8mins by walk
- Namboku Line 「Kita 18-jo station」 2mins by walk
- Supermarket Dinnerbell 4mins by walk



201→West facing
401→West facing
409→West facing



※Only examples. The drawings are handwritten and the current status is give



北海道大学生活協同組合 ルームガイド

TEL:011-758-9550 FAX: 011-768-8907

北海道知事 石狩(9)第5076号

〒060-0808 北海道札幌市北区北8条西7丁目1-1 クラークサービスセンター2F

Mail:guide@hokudai-roomguide.net