

Name	unami18
Location	Kita-ku, kita 18-jo nishi 6-chome 2-12
Construction	Built in 1988, Steel, 4 stories, 32 units

Contract period	Bathroom/Toilet	Heater	Gas	Internet
2 years	separate	kerosene	propane	Assigned internet (free)

<Propane information>

Basic fee	5.0m ² (include basic fee)	10.0m ² (include basic fee)	15.0m ² (include basic fee)	20.0m ² (include basic fee)
2145円 (with tax)	7,260円 (with tax)	12,375円 (with tax)	14,850円 (with tax)	16500円 (with tax)

* Prices are counted by 10% tax fee, vary depending on the the price of crude oil. (updated: 2022/2/17)

available date	room	floor	layout	Facing	rent fee	deposit key money	management
						0・0	3,000
※Rent fee will be increased by 1,000 yen for 1 year							

initial cost	deposit	0 month
	key money	0 month
	rent fee in advance	1 month
	management fee	1 month
	association fee	200 円
	water bill	3,000 円
	cleaning fee	28,600 円
※24h foreigner support	1,000 円	
※Payment Commission		As below

monthly cost	rent fee	as above
	management	as above
	water bill	3,000 円
	association	200 円
	electricity	consumption
	gas	consumption
	kerosene	consumption
※24h foreigner support	1,000 円	
※Payment Commission		As below

others	※24h foreigner support is needed for foreigner 1,000 per month) ※water bill of September is 2,900円 ※Payment Commission: (Rent fee+Management fee+Water+24h language support)×1.5% (Only when using a guarantee company) Cleaning fee : 28,600円 (tax included) ←Apply for contract after 5/1/2021
--------	---

Facilities	gas hot water supply/kerosene heater/washing machine/refrigerator/micro wave/desk lamp/table TV/broadcasting digital tuner/bed/mattress/curtain/clothes iron/dryer/vacuum cleaner garbage box/rice cooker/water kettle/kitchen bunner/lights/closet
------------	---

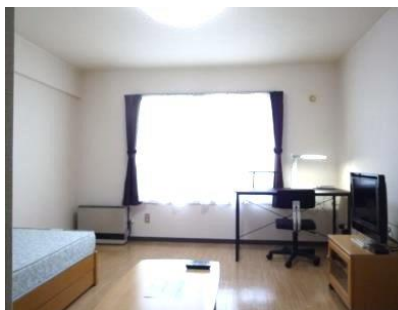
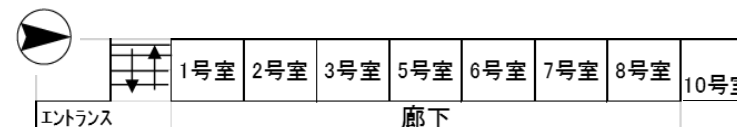
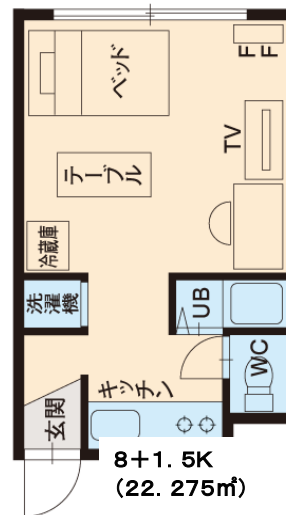
Common Facilities	Bike parking lot
-------------------	------------------

- ~ Recommended points ~ **appliances are all on hand**
- ★ with furnitures and home appliances! ★ quiet street close to univ
 - ★ Free Wifi is available inmediately after move in ♪
- ~ Neighborhood information ~

- Hokkaido University (Kita 18-jo gate) ... 3mins by walk
- Namboku Line「Kita 18-jo station」 5mins by walk
..... 5mins by walk



※ Only examples. The drawings are handwritten and the current status is in given priority.



Photos are examples.